



WHAT WOULD YOU EXPECT TO SEE IN *Geography*



KEY CURRICULUM THEME IS LOCATIONAL KNOWLEDGE AND IS RECAPPED EACH LESSON



OVERARCHING ENQUIRY QUESTION RELATING TO AREA OF STUDY



MINI ENQUIRIES EACH LESSON



RETRIEVAL OF CORE FACTS EACH LESSON



CAREER LINKS RELATED TO AREA OF STUDY



A RANGE OF HIGH QUALITY SOURCES SUPPORT GEOGRAPHICAL UNDERSTANDING



USE OF WIDGIT TO SUPPORT PUPIL UNDERSTANDING OF KEY VOCABULARY

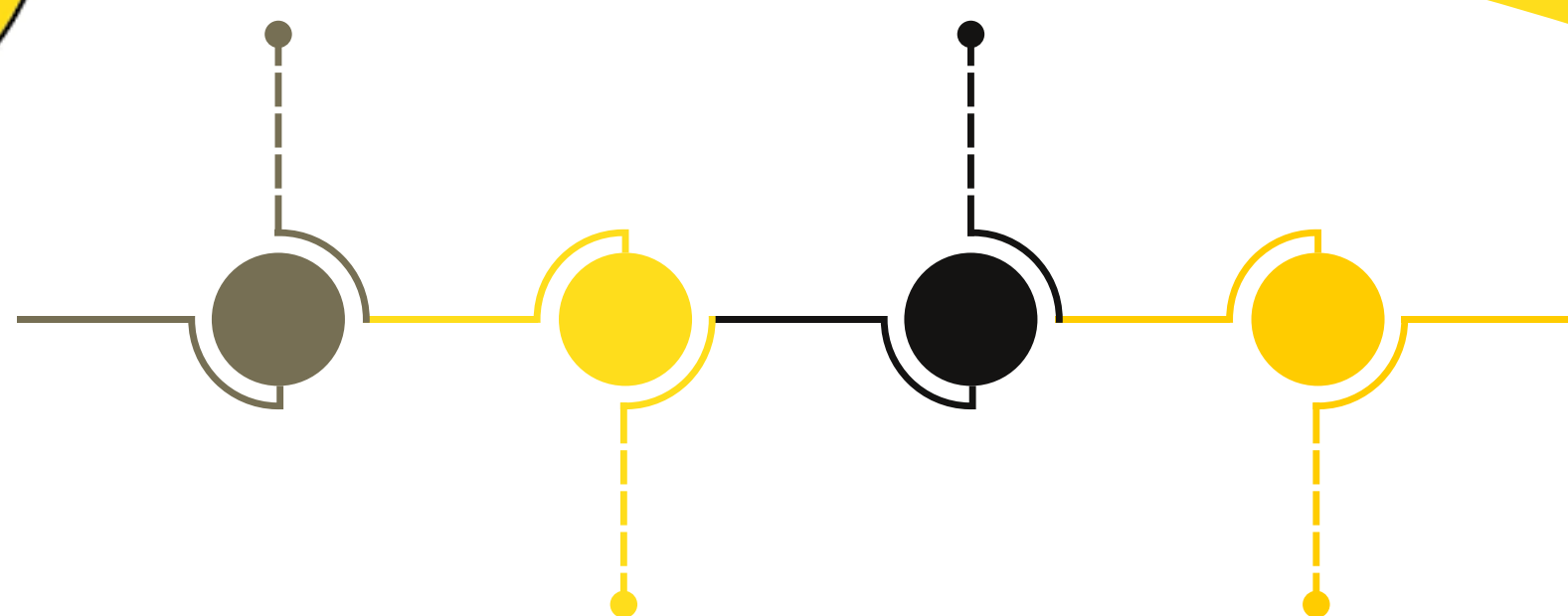


GEOGRAPHICAL SKILLS AND KNOWLEDGE ARE BOTH ASSESSED



WHAT WOULD YOU EXPECT TO SEE IN

History



KEY CURRICULUM THEME IS
CHRONOLOGY AND IS
RECAPPED EACH LESSON



OVERARCHING ENQUIRY
QUESTION RELATING TO
AREA OF STUDY



MINI ENQUIRIES EACH
LESSON



RETRIEVAL OF CORE FACTS
EACH LESSON



RELEVANT CAREER LINKS AND
NOTABLE PEOPLE FROM AREA OF
STUDY SHARED



A RANGE OF HIGH QUALITY
SOURCES SUPPORT HISTORICAL
UNDERSTANDING



USE OF WIDGIT TO SUPPORT
PUPIL UNDERSTANDING OF
KEY VOCABULARY



HISTORICAL SKILLS AND
KNOWLEDGE ARE BOTH
ASSESSED



WHAT WOULD YOU EXPECT TO SEE IN

Mathematics



KEY CURRICULUM THEME IS MENTAL ARITHMETIC AND FLUENCY. THIS IS REHEARSED DAILY



WHITE ROSE IS USED TO SUPPORT TEACHERS SMALL STEPS PROGRESSION PLANNING



STRONG FOCUS ON I DO, WE DO, YOU DO APPROACH



RETRIEVAL OF PRIOR LEARNING EACH LESSON



COMMON MISCONCEPTIONS PRE-EMPTED IN THE TEACHING INPUT



FLUENCY, REASONING AND PROBLEM SOLVING BUILT INTO TEACHING INPUT



USE OF WIDGIT TO SUPPORT PUPIL UNDERSTANDING OF KEY VOCABULARY



PUPILS CHALLENGED THROUGH COMPLEXITY OF PROBLEMS



WHAT WOULD YOU EXPECT TO SEE IN

Guided Reading



KEY CURRICULUM THEME IS TO DEVELOP LITERACY THROUGH THE LOVE OF READING



VIPERS USED TO ENHANCE UNDERSTANDING OF QUESTION TYPES WITHIN COMPREHENSION



USE OF WIDGIT TO SUPPORT PUPIL UNDERSTANDING OF KEY VOCABULARY



I DO, WE DO, YOU DO APPROACH USED TO ENHANCE PUPIL CONFIDENCE



ANSWERS REVIEWED AS A CLASS FOLLOWING INDEPENDENT PRACTICE



PUPILS GIVEN TIME TO READ INDEPENDENTLY, TO A PARTNER AND OUT LOUD. ALL PUPILS TO FOLLOW TEXT.



ECHO READING USED TO SUPPORT PUPILS WITH INDEPENDENT READING



A RANGE OF TEXT TYPES THAT BROADEN PUPILS' HORIZONS



WHAT WOULD YOU EXPECT TO SEE IN

Writing



KEY CURRICULUM THEME IS TO DEVELOP LITERACY THROUGH THE LOVE OF READING



MORRELL'S HANDWRITING WARM-UPS ARE USED TO ENHANCE PUPIL PRESENTATION



PUPILS EDIT AND RE-WRITE A DAILY SENTENCE FOCUSING ON THE CORE SKILLS



I DO, WE DO, YOU DO APPROACH USED TO ENHANCE PUPIL UNDERSTANDING



GRAMMARSaurus APPROACH IS CONTINUALLY REFERRED TO THROUGHOUT WRITING UNIT



USE OF WIDGIT TO SUPPORT PUPIL UNDERSTANDING OF KEY VOCABULARY



PUPILS EDIT WRITING USING GRAMMARSaurus APPROACH

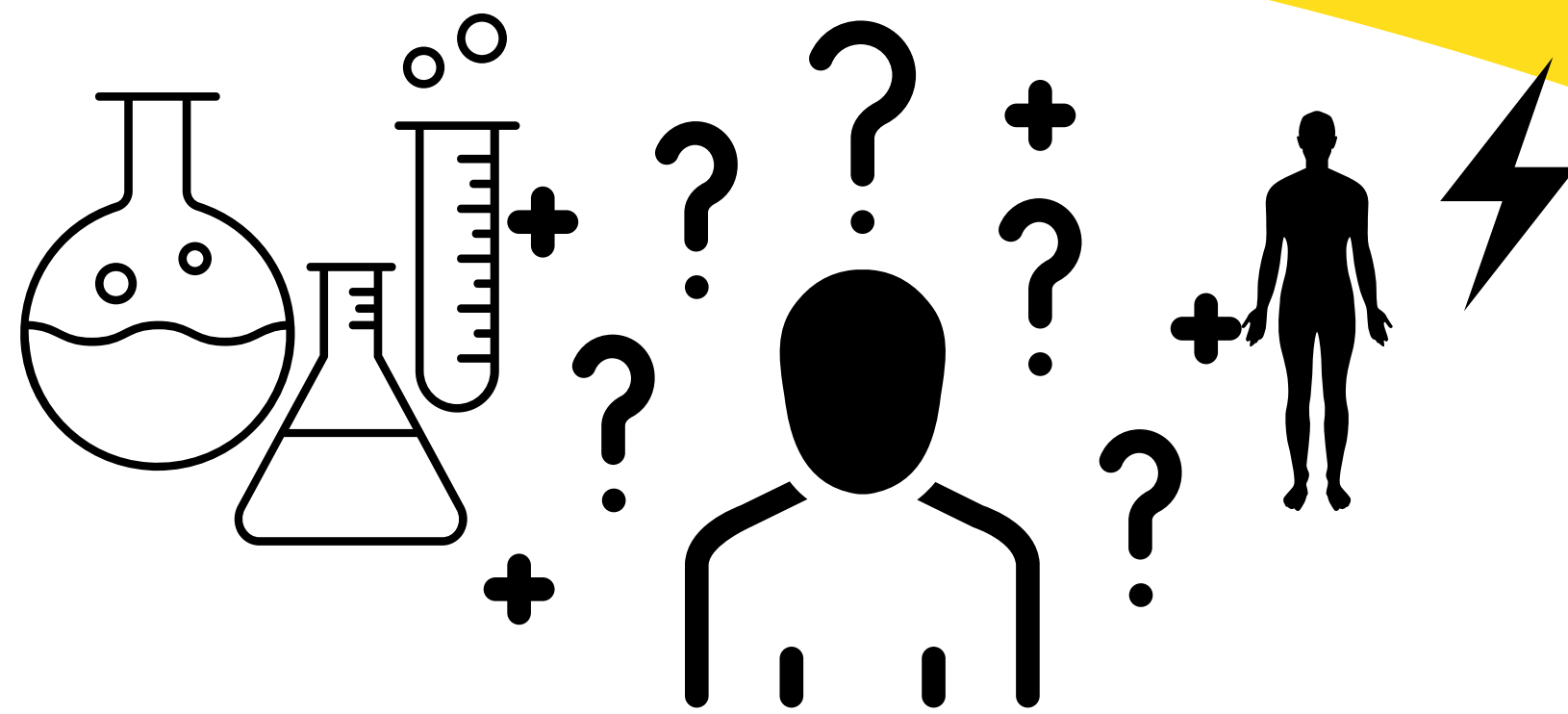


PUPILS CHALLENGED TO ENHANCE VOCABULARY AND VARY SENTENCE TYPES



WHAT WOULD YOU EXPECT TO SEE IN

Science



KEY CURRICULUM THEME IS TO DEVELOP CURIOSITY THROUGH PUPILS BEING INQUISITIVE



RETRIEVAL OF PRIOR KNOWLEDGE EACH LESSON, ADDRESSING CORE KNOWLEDGE AND GAPS



EXPLORIFY ACTIVITIES RELEVANT TO AREA OF LEARNING PROVIDE OPPORTUNITY FOR SCIENCE TALK



RELEVANT STEM CAREERS LINKED TO AREA OF LEARNING



KEY SCIENTISTS RELATED TO AREA OF LEARNING SHARED WITH PUPILS



USE OF WIDGIT TO SUPPORT PUPIL UNDERSTANDING OF KEY VOCABULARY



'DEVELOPING EXPERTS' USED TO SUPPORT TEACHING AND LEARNING OF CONCEPTS



PUPILS CHALLENGED TO ASK QUESTIONS, INVESTIGATE AND PROVE IT



WHAT WOULD YOU EXPECT TO SEE IN

Art and Design



KEY CURRICULUM THEME IS TO ANALYSE AND EVALUATE CREATIVE WORKS



WHAT DO YOU SEE, THINK, WONDER? PUPILS GIVEN OPPORTUNITY TO TALK ABOUT ART



LESSONS BUILD UP TECHNIQUES IN ORDER TO APPLY IN PUPILS' FINAL PIECES OF WORK



KEY ARTIST (LOCAL, NATIONAL AND GLOBAL) SHARED WITH PUPILS



PUPILS COMPLETE AN ARTIST STUDY IN EACH UNIT OF WORK



USE OF WIDGIT TO SUPPORT PUPIL UNDERSTANDING OF KEY VOCABULARY



DRAWING WARM UPS USED EACH LESSON TO ENHANCE PUPILS CONTROL AND OBSERVATION



PUPILS ANALYSE AND EVALUATE THEIR OWN WORK



WHAT WOULD YOU EXPECT TO SEE IN

Languages

IHOLA!

MYTTEN DHA



KEY CURRICULUM THEME IS THE CULTURE OF LANGUAGE AND COUNTRY

PRIOR LEARNING IS FOCUSED ON DURING RETRIEVAL ACTIVITIES

TWINKL PLANNING AND RESOURCES IS USED TO ENHANCE THE DELIVERY OF SPANISH SESSIONS

I DO, WE DO, YOU DO APPROACH IS USED TO SUPPORT PRONUNCIATION OF VOCABULARY

GO CORNISH RESOURCES ARE USED TO DEVELOP AN APPRECIATION OF OUR LOCAL CONTEXT

PICTURES SUPPORT PUPIL UNDERSTANDING OF KEY VOCABULARY

AN ELEMENT OF SPANISH CULTURE IS SHARED AT THE START OF EACH SPANISH LESSON

PUPILS KNOWLEDGE AND SKILLS ARE ASSESSED EACH UNIT



WHAT WOULD YOU EXPECT TO SEE IN

PE



KEY CURRICULUM THEME IS THE SANDY HILL STARS VALUES



SPORT IS THE VEHICLE TO DEVELOPING SKILLS AND DEVELOPING CHARACTER



LESSONS BUILD UP PUPILS SKILLS TO ENABLE THEM TO TAKE PART IN COMPETITIVE GAMES



KEY SPORTS PERSON SHARED RELATED TO AREA OF LEARNING



LESSONS ARE AT LEAST 80% ACTIVE WITH PLENTY OF TIME FOR INDEPENDENT PRACTICE



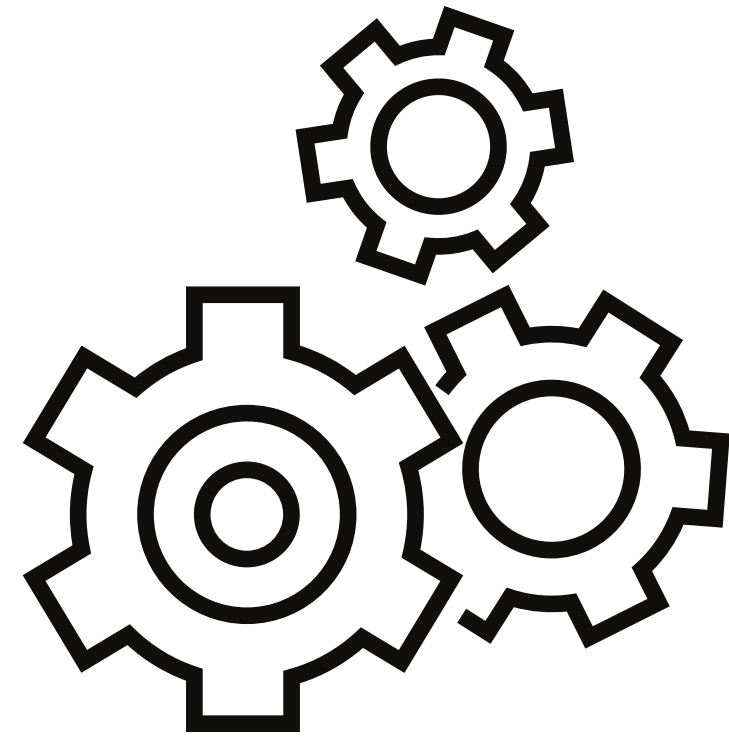
USE OF WIDGIT TO SUPPORT PUPIL UNDERSTANDING OF KEY VOCABULARY



LADDER EXERCISES ARE USED IN EACH LESSON TO DEVELOP PUPILS AGILITY, BALANCE AND CO-ORDINATION



SUCCESS IS DEVELOPMENT OF CHARACTER AS WELL AS SPECIFIC SKILLS DEVELOPMENT



WHAT WOULD YOU EXPECT TO SEE IN

Design Technology



KEY CURRICULUM THEME IS TO DEVELOP PUPILS' TECHNICAL KNOWLEDGE



PRIOR LEARNING IS RECAPPED THROUGH RETRIEVAL ACTIVITIES EACH LESSON



PUPILS GIVEN OPPORTUNITY TO ENHANCE AND APPLY THEIR TECHNICAL KNOWLEDGE TO DIFFERENT SCENARIOS



PUPILS DISCUSS DESIGN AND TECHNOLOGY: WHAT DO YOU SEE, THINK, WONDER?



KEY DESIGNER RELATED TO AREA OF STUDY SHARED WITH THE PUPILS



USE OF WIDGIT TO SUPPORT PUPIL UNDERSTANDING OF KEY VOCABULARY



PUPILS FOLLOW THE JOURNEY: DESIGN, MAKE, EVALUATE

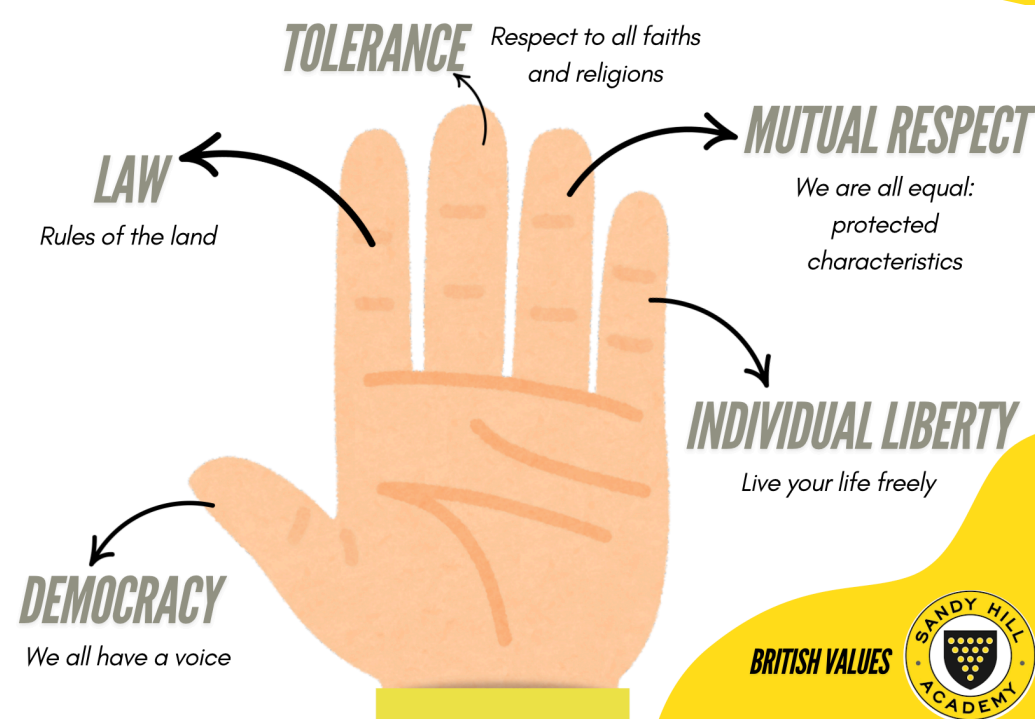


PUPILS EVALUATE THEIR WORK WITH THE SELF-EVALUATION TRIANGLE



WHAT WOULD YOU EXPECT TO SEE IN

PSHE/RSE



KEY CURRICULUM THEME IS TO DEVELOP PUPILS' UNDERSTANDING OF THE BRITISH VALUES



LEARNING IS SOMETIMES RECORDED IN BOOKS, HOWEVER CAN TAKE THE FORM OF DISCUSSION



PRIOR LEARNING IS RECAPPED THROUGH RETRIEVAL ACTIVITIES EACH LESSON



USE OF WIDGIT TO SUPPORT PUPIL UNDERSTANDING OF KEY VOCABULARY



TEACHING AND LEARNING IS ENHANCED THROUGH USE OF SCARF LESSON PLANNING AND RESOURCES



PUPILS DISCUSS BRITISH VALUES IN RELATION TO HALF-TERMLY THOUGHT-PROVOKING QUESTIONS



PUPILS DISCUSS SCENARIOS: WHAT DO YOU SEE, THINK, WONDER?

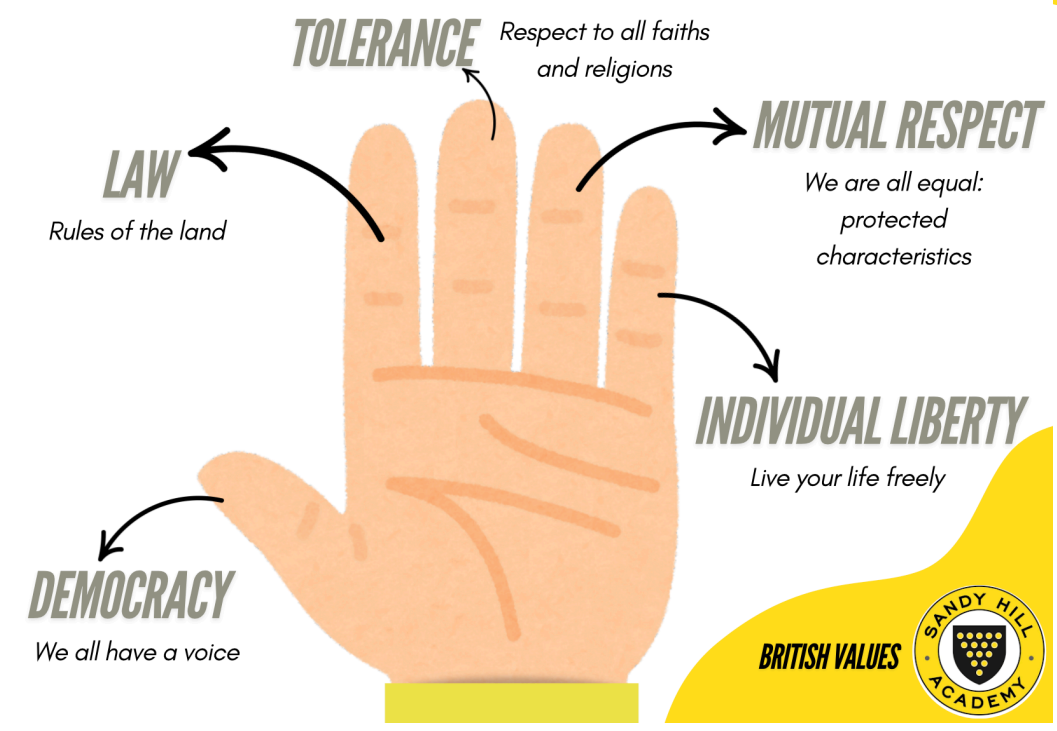


PUPILS SKILLS AND KNOWLEDGE ARE ASSESSED EACH UNIT USING SCARF RESOURCES



WHAT WOULD YOU EXPECT TO SEE IN

RE



KEY CURRICULUM THEME IS TO DEVELOP PUPILS' UNDERSTANDING OF THE BRITISH VALUES



AN UMBRELLA QUESTION IS USED AS A STIMULUS FOR LEARNING WITH ALL LESSONS BUILDING UNDERSTANDING



PRIOR LEARNING IS RECAPPED THROUGH RETRIEVAL ACTIVITIES EACH LESSON



USE OF WIDGIT TO SUPPORT PUPIL UNDERSTANDING OF KEY VOCABULARY



TEACHING AND LEARNING IS ENHANCED THROUGH USE OF NATURE LESSON PLANNING AND RESOURCES



PUPILS DISCUSS BRITISH VALUES IN RELATION TO HALF-TERMLY THOUGHT-PROVOKING QUESTIONS



PUPILS RESPECTFULLY DISCUSS AND MAKE LINKS BETWEEN DIFFERENT RELIGIONS: COMPARING AND CONTRASTING



PUPILS SKILLS AND KNOWLEDGE ARE ASSESSED AGAINST THE UMBRELLA QUESTION



WHAT WOULD YOU EXPECT TO SEE IN *Music*



KEY CURRICULUM THEME IS LISTENING TO AND APPRAISING MUSIC



PRIOR LEARNING IS RECAPPED THROUGH RETRIEVAL ACTIVITIES EACH LESSON



PUPILS START EACH LESSON BY LISTENING TO THE PIECE OF MUSIC, SHARING THEIR PREFERENCES AND USING KEY VOCABULARY



PUPILS IMMERSE THEMSELVES INTO THE MUSICAL PIECE BY PLAYING A SERIES OF GAMES



PUPILS LEARN TO SING SONGS AND PLAY ALONG WITH INSTRUMENTS



USE OF WIDGIT TO SUPPORT PUPIL UNDERSTANDING OF KEY VOCABULARY



PUPILS PERFORM THEIR LEARNING AT THE END OF EACH LESSON



ASSESSMENT IS RECORDED USING BOOK CREATOR SHOWING BEFORE AND AFTER PERFORMANCES



WHAT WOULD YOU EXPECT TO SEE IN

Computing



KEY CURRICULUM THEME IS INTERNET SAFETY: THIS IS REVISITED THROUGH A SCENARIO EACH LESSON



PRIOR LEARNING IS RECAPPED THROUGH RETRIEVAL ACTIVITIES EACH LESSON



TEACHING AND LEARNING IS ENHANCED THROUGH USE OF PROJECT EVOLVE RESOURCES



PUPILS ARE CONTINUALLY REMINDED TO USE TECHNOLOGY RESPONSIBLY



WHEN ADULTS ARE TEACHING, PUPILS ARE FOCUSED ON THE ADULT, NOT THE SCREEN



USE OF WIDGIT TO SUPPORT PUPIL UNDERSTANDING OF KEY VOCABULARY



PUPILS COMPLETE WORK ON CHROMEBOOKS AND SAVE WORK ON GOOGLE CHROME



A RANGE OF APPROVED RESOURCES ARE USED TO ENSURE PUPILS NAVIGATE ONLINE SAFELY